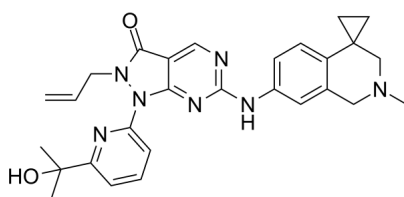


Data Sheet

Product Information

Catalog Number	BP13293
Product Name	WEE1-IN-3
Description	JUN76288 is a potent Wee1 kinase inhibitor with an IC ₅₀ of <10 nM. It treatment of cancer and other proliferative diseases.
Targets&IC ₅₀	Wee1:<10 nM
In vitro	WEE1-IN-3 inhibits cancer cell growth with IC ₅₀ values of 100-1000 nM and <100 nM for SW480 cells and H23 cells, respectively. ?WEE1 is overexpressed in various cancer types,?WEE1 kinase plays a role in the G2-M cell-cycle checkpoint arrest for ?NA repair before mitotic entry.?Normal cells repair damaged DNA during GI arrest.?Cancer cells often have a deficient G i-S checkpoint and depend on a functional G2-M checkpoint for DNA repair.
Synonyms	JUN76288
CAS No.	2272976-28-8
Chemical Formula	C ₂₈ H ₃₁ N ₇ O ₂
Molecular Weight	497.603
Solubility	DMSO: 250 mg/mL (502.42 mM), Need ultrasonic
Storage	Powder: -20°C for 2 years In solvent: -80°C for 1 year

Chemical Structure
OR
Tested Image



Purdue Bioscience Inc.

750 50th St, Brooklyn, NY 11220, USA

<https://www.purduebio.com>

1-877.618.7311

info@purduebio.com

v2 Revision on 12/28/2022