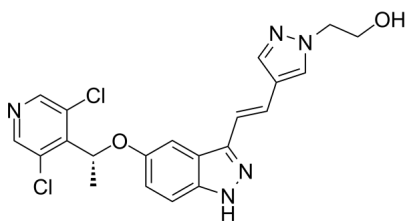


Data Sheet

Product Information

Catalog Number	BP10296
Product Name	LY2874455
Description	LY2874455 has been used in trials studying the treatment of Advanced Cancer.
Targets&IC50	FGFR4: 6 nM, FGFR3: 6.4 nM, FGFR1: 2.8 nM, FGFR2: 2.6 nM, VEGFR2: 7 nM
In vitro	Cells (2,000 per well) are first grown in RPMI for 6 hours and treated with LY2874455 at 37 °C for 3 days. The cells are stained at 37°C for 4 hours and then solubilized at 37°C for 1 hour. Finally, the plate is read at 570 nm using a plate reader (Spectra Max Gemini XS). (Only for Reference)
Synonyms	LY-2874455, LY 2874455
CAS No.	1254473-64-7
Chemical Formula	C ₂₁ H ₁₉ Cl ₂ N ₅ O ₂
Molecular Weight	444.32
Solubility	DMSO: 82 mg/mL (184.6 mM) Ethanol: 53 mg/mL (119.3 mM)
Storage	Powder: -20°C for 2 years In solvent: -80°C for 1 year

Chemical Structure
OR
Tested Image



Purdue Bioscience Inc.

750 50th St, Brooklyn, NY 11220, USA

<https://www.purduebio.com>

1-877.618.7311

info@purduebio.com

v2 Revision on 12/28/2022