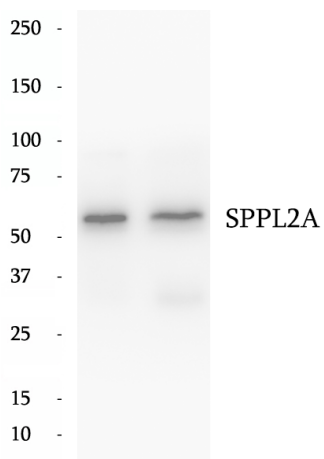


## Data Sheet

### Product Information

Catalog Number	BP64601
Product Name	Anti-SPPL2A antibody
Description	SPPL2A (Signal peptide peptidase-like 2A) is also named as IMP3 (Intramembrane protease 3), PSL2 (Presenilin-like protein 2) and belongs to the peptidase A22B family. It is an aspartyl intramembrane protease, has been implicated in the proteolysis of TNF-alpha, Fas Ligand and Bri2 and endogenous signal-peptide-peptidase-like2A (SPPL2a) is localised in lysosomes/late endosomes. This protein has a signal peptide with 25 amino acid and seven glycosylation sites.
Tested Applications	WB: 1:1000; IF: 1:100-1:300; IHC:1:50-1:200
Species Reactivity	Human, Mouse, Rat
Host Species/Isotype	Rabbit/IgG
Molecular Weight	58 kDa
GenBank	BC025740
Uniprot	Q8TCT8
Concentration	250 µg/ml
Form	Liquid
Storage Instruction	10 mM sodium HEPES (pH 7.5), 150 mM NaCl, 100 µg/ml BSA and 50% glycerol. Store at -20°C. Do Not Aliquot.

Chemical Structure  
OR  
Tested Image



Purdue Bioscience Inc.

750 50th St, Brooklyn, NY 11220, USA

<https://www.purduebio.com>

1-877.618.7311

info@purduebio.com

v2 Revision on 12/28/2022