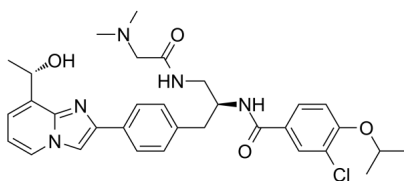


## Data Sheet

### Product Information

Catalog Number	BP10115
Product Name	GSK-923295
Description	GSK923295 is a selective allosteric inhibitor of CENP-E kinesin motor ATPase( $K_i=3.2$ nM).
Targets&IC50	CENP-E: 3.2 nM( $K_i$ )
In vitro	Cell-growth inhibition assays are performed by MDS in 384-well plates, and DNA content of fixed cells stained with DAPI using an Incell 1000 is analyzed. DNA content is determined 24 h after seeding (T0) and after exposure to varying concentrations of drug for an additional 72 h (T72). All T72 measurements are normalized to T0. Curves are analyzed using the XLfit curve-fitting tool to determine the concentration of GSK923295 yielding 50% growth inhibition relative to T0 and Ymax values (GI50).(Only for Reference)
Synonyms	GSK923295
CAS No.	1088965-37-0
Chemical Formula	C32H38ClN5O4
Molecular Weight	592.14
Solubility	H2O: <1 mg/mL Ethanol: 93 mg/mL (157.1 mM); DMSO: 93 mg/mL (157.1 mM)
Storage	Powder: -20°C for 2 years In solvent: -80°C for 1 year

Chemical Structure  
OR  
Tested Image



Purdue Bioscience Inc.

750 50th St, Brooklyn, NY 11220, USA

<https://www.purduebio.com>

1-877.618.7311

info@purduebio.com

v2 Revision on 12/28/2022