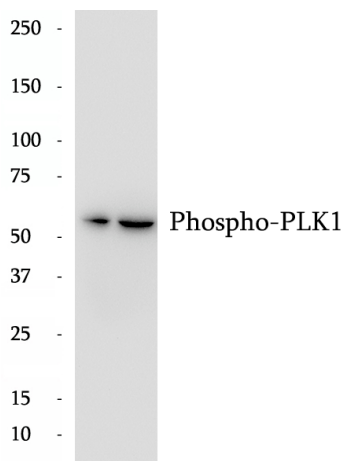


## Data Sheet

### Product Information

|                      |  |
|----------------------|--|
| Catalog Number       | BP63617  |
| Product Name         | Anti-Phospho-PLK1 (Ser326) antibody  |
| Description          | PLK1, also named as PLK and STPK13, belongs to the protein kinase superfamily, Ser/Thr protein kinase family and CDC5/Polo subfamily. PLK1 is a Serine/threonine-protein kinase that performs several important functions throughout M phase of the cell cycle, including the regulation of centrosome maturation and spindle assembly, the removal of cohesins from chromosome arms, the inactivation of APC/C inhibitors, and the regulation of mitotic exit and cytokinesis. The antibody is specific to Ser (326)-phospho. |
| Tested Applications  | WB: 1:1000; IF: 1:100-1:300; IHC:1:50-1:200  |
| Species Reactivity   | Human, Mouse, Rat  |
| Host Species/Isotype | Rabbit/IgG   |
| Molecular Weight     | 66 kDa   |
| GenBank              | NM_005030  |
| Uniprot              | P53350   |
| Concentration        | 290 µg/ml  |
| Form                 | Liquid   |
| Storage Instruction  | 10 mM sodium HEPES (pH 7.5), 150 mM NaCl, 100 µg/ml BSA and 50% glycerol.<br>Store at -20°C. Do Not Aliquot.   |

Chemical Structure  
OR  
Tested Image



Purdue Bioscience Inc.

750 50th St, Brooklyn, NY 11220, USA

<https://www.purduebio.com>

1-877.618.7311

info@purduebio.com

v2 Revision on 12/28/2022