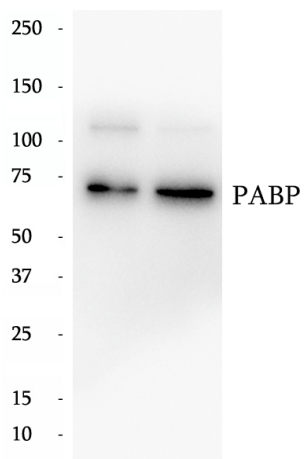


Data Sheet

Product Information

Catalog Number	BP63373
Product Name	Anti-PABP antibody
Description	<p>The poly (A)-binding protein (PABP), which is found complexed to the 3-prime poly (A) tail of eukaryotic mRNA, is required for poly (A) shortening and translation initiation. Polyadenylate-binding protein 1 (PABPC1) is a cytoplasmic-nuclear shuttling protein important for protein translation initiation, and both RNA processing and stability. In the cytoplasm, PABPC1 binds to the 3' poly (A) tail of eukaryotic mRNAs through its RNA-recognition motifs (RRM) and interacts with the N-terminus of eIF4G, part of the eIF4F complex associated with the 5' cap structure.</p>
Tested Applications	WB: 1:1000; IF: 1:100-1:300; IHC:1:50-1:200
Species Reactivity	Human, Mouse, Rat
Host Species/Isotype	Rabbit/IgG
Molecular Weight	71 kDa
GenBank	BC015958
Uniprot	P11940
Concentration	410 µg/ml
Form	Liquid
Storage Instruction	10 mM sodium HEPES (pH 7.5), 150 mM NaCl, 100 µg/ml BSA and 50% glycerol. Store at -20°C. Do Not Aliquot.

Chemical Structure
OR
Tested Image



Purdue Bioscience Inc.

750 50th St, Brooklyn, NY 11220, USA

<https://www.purduebio.com>

1-877.618.7311

info@purduebio.com

v2 Revision on 12/28/2022