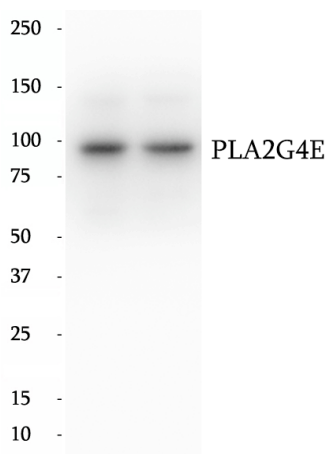


## Data Sheet

### Product Information

Catalog Number	BP63692
Product Name	Anti-PLA2G4E antibody
Description	PLA2G4E (Phospholipase A2 group IVE), also known as cPLA2-epsilon. Calcium-dependent N-acyltransferase is involved in the biosynthesis of N-acyl ethanolamines (NAEs) in the brain to the amine group of phosphatidylethanolamine (fatty acyl acceptor) to generate N-acyl phosphatidylethanolamine (NAPE). Similarly can use plasmenylethanolamine as a fatty acyl acceptor to form N-acyl plasmenylethanolamine (N-Acyl-PlsEt). Both NAPE and N-Acyl-PlsEt can serve as precursors of bioactive NAEs like N-arachidonoyl phosphatidylethanolamine also called anandamide.
Tested Applications	WB: 1:1000; IF: 1:100-1:300; IHC:1:50-1:200
Species Reactivity	Human, Mouse, Rat
Host Species/Isotype	Rabbit/IgG
Molecular Weight	98 kDa
GenBank	BC101584
Concentration	630 µg/ml
Form	Liquid
Storage Instruction	10 mM sodium HEPES (pH 7.5), 150 mM NaCl, 100 µg/ml BSA and 50% glycerol. Store at -20°C. Do Not Aliquot.

Chemical Structure  
OR  
Tested Image



Purdue Bioscience Inc.

750 50th St, Brooklyn, NY 11220, USA

<https://www.purduebio.com>

1-877.618.7311

info@purduebio.com

v2 Revision on 12/28/2022