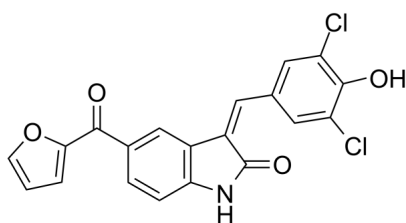


## Data Sheet

### Product Information

Catalog Number	BP12504
Product Name	GW406108X
Description	GW108X is a Kif15 inhibitor with an IC <sub>50</sub> of 0.82 uM in ATPase assays. GW837331X is also an ULK1 kinase inhibitor with pIC <sub>50</sub> values of 6.37 (427 nM) and block autophagic flux.
Targets&IC <sub>50</sub>	Kif15:0.82 μM, ULK1:PIC <sub>50</sub> =6.37
In vitro	GW406108X were acting upon ULK1 and autophagy without affecting mTOR or AMPK activity as shown by monitoring ULK1 pS758 (mTOR site) or pS556 (AMPK site) levels.
Synonyms	GW108X
CAS No.	1644443-92-4
Chemical Formula	C <sub>20</sub> H <sub>11</sub> Cl <sub>2</sub> NO <sub>4</sub>
Molecular Weight	400.21
Solubility	DMSO: 45mg/ml(112.44mM), Need ultrasonic
Storage	Powder: -20°C for 2 years In solvent: -80°C for 1 year

Chemical Structure  
OR  
Tested Image



Purdue Bioscience Inc.

750 50th St, Brooklyn, NY 11220, USA

<https://www.purduebio.com>

1-877.618.7311

info@purduebio.com

v2 Revision on 12/28/2022