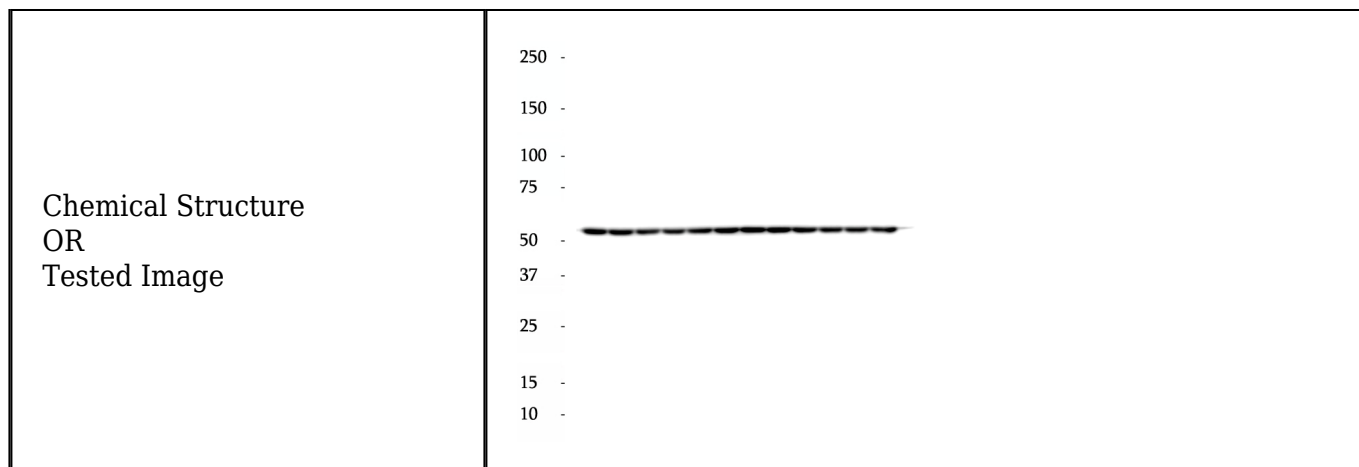


Data Sheet

Product Information

| | |
|----------------------|--|
| Catalog Number | BP69326 |
| Product Name | HRP Anti-Beta Tubulin antibody |
| Description | <p>There are five tubulins in human cells: alpha, beta, gamma, delta, and epsilon. Tubulins are conserved across species. They form heterodimers, which multimerize to form a microtubule filament. An alpha and beta tubulin heterodimer is the basic structural unit of microtubules. The heterodimer does not come apart, once formed. The alpha and beta tubulins, which are each about 55 kDa MW, are homologous but not identical. Alpha, beta, and gamma tubulins have all been used as loading controls. Tubulin expression may vary according to resistance to antimicrobial and antimitotic drugs.</p> |
| Tested Applications | WB: 1:2000-1:10000 |
| Species Reactivity | Human, Mouse, Rat |
| Host Species/Isotype | Mouse/IgG2a |
| Molecular Weight | 50-55 kDa |
| GenBank | BC000748 |
| Uniprot | Q13509 |
| Concentration | 1000µg/ml |
| Form | Liquid |
| Storage Instruction | <p>10 mM sodium HEPES (pH 7.5), 150 mM NaCl, 100 µg/ml BSA and 50% glycerol. Store at -20°C. Do Not Aliquot.</p> |



Purdue Bioscience Inc.

750 50th St, Brooklyn, NY 11220, USA

<https://www.purduebio.com>

1-877.618.7311

info@purduebio.com

v2 Revision on 12/28/2022