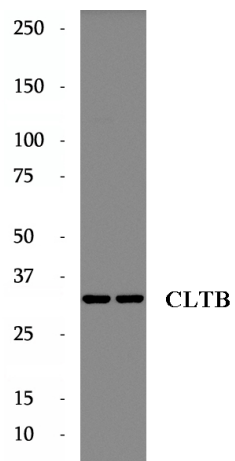


## Data Sheet

### Product Information

Catalog Number	BP60987
Product Name	Anti-CLTB antibody
Description	Clathrin is the major protein of the polyhedral coat of coated pits and vesicles which entrap specific macromolecules during receptor-mediated endocytosis. The clathrin molecule has a triskelion shape. Each clathrin triskelion is composed of three identical heavy chains (180 kDa) and three light chains of two types, LCA (CLTA) and LCB (CLTB) (30-40 kDa). The light chain subunits are thought to regulate the formation or disassembly of clathrin coats.
Tested Applications	WB: 1:1000; IF: 1:100-1:300; IHC:1:50-1:200
Species Reactivity	Human, Mouse, Rat
Host Species/Isotype	Rabbit/IgG
Molecular Weight	32-38 kDa
GenBank	BC006457
Uniprot	P09497
Concentration	840 µg/ml
Form	Liquid
Storage Instruction	10 mM sodium HEPES (pH 7.5), 150 mM NaCl, 100 µg/ml BSA and 50% glycerol. Store at -20°C. Do Not Aliquot.

Chemical Structure  
OR  
Tested Image



Purdue Bioscience Inc.

750 50th St, Brooklyn, NY 11220, USA

<https://www.purduebio.com>

1-877.618.7311

info@purduebio.com

v2 Revision on 12/28/2022