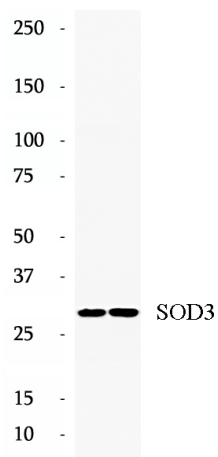


Data Sheet

Product Information

Catalog Number	BP64546
Product Name	Anti-SOD3 antibody
Description	SOD is located intracellular (SOD-1; cytosolic, SOD-2; mitochondrial matrix) and extracellular (SOD-3), and catalyzes the dismutation of superoxide anion to H ₂ O ₂ . SOD3, or EC-SOD, is the most recently characterized SOD, exists as a copper and zinc-containing tetramer, and is synthesized containing a signal peptide that directs this enzyme exclusively to extracellular spaces. SOD-3 is a Mn-containing tetrameric protein with a subunit Mr of 24-35 kDa. The activity of EC-SOD is dependent on its ability to form a tetramer of 135 kDa.
Tested Applications	WB: 1:1000; IF: 1:100-1:300; IHC:1:50-1:200
Species Reactivity	Human, Mouse, Rat
Host Species/Isotype	Rabbit/IgG
Molecular Weight	25-33 kDa
GenBank	BC014418
Uniprot	P08294
Concentration	410 µg/ml
Form	Liquid
Storage Instruction	10 mM sodium HEPES (pH 7.5), 150 mM NaCl, 100 µg/ml BSA and 50% glycerol. Store at -20°C. Do Not Aliquot.

Chemical Structure
OR
Tested Image



Purdue Bioscience Inc.

750 50th St, Brooklyn, NY 11220, USA

<https://www.purduebio.com>

1-877.618.7311

info@purduebio.com

v2 Revision on 12/28/2022